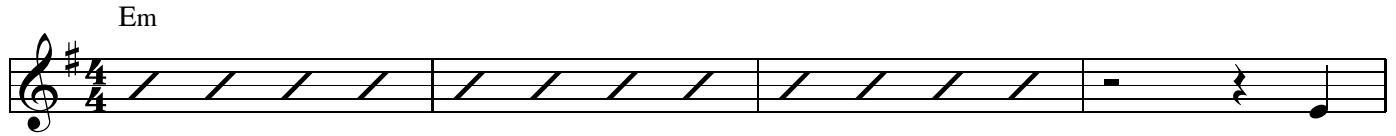


O Come, O Come, Emmanuel

Latin Antiphons, 12th Century

Plainsong, 13th Century

INTRO



O
O
O
O

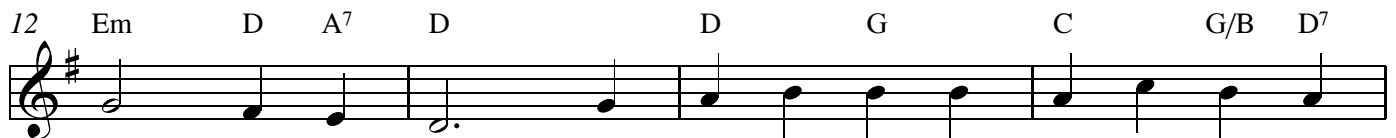
VERSE



come, O come, Em - man - u - el, and
come, thou Rod of Jes - se, free thine
come, thou Day - spring from on high, and
come, thou Key of Da - vid come and

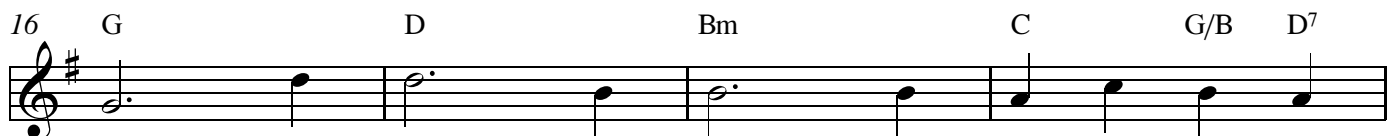


ran - som cap - tive Is - ra - el, that mourns in lone - ly
own from Sa - tan's tyr - an - ny; from depths of hell thy
cheer us by thy draw - ing nigh; dis - perse the gloom - y
o - pen wide our heav'n - ly home; make safe the way that



ex - ile here, un - til the Son of God ap -
peo - ple save, and give them vic - t'ry o'er the
clouds of night, and death's dark shad - ows put to
leads on high, and close the path to mis - er -

REFRAIN



pear.
grave.
flight.
y.
Re - joice! Re - joice! Em - man - u -

Last Time to Coda

20 Em D/F# G C Am Bm

el shall come to thee, O Is - - ra -

1.2.3 Back to Verse (bar 5) 4. D.S. al Coda

23 Em Em

el. O el. Re -

O
O
O

 CODA

26 Em Em

el. *fine*