

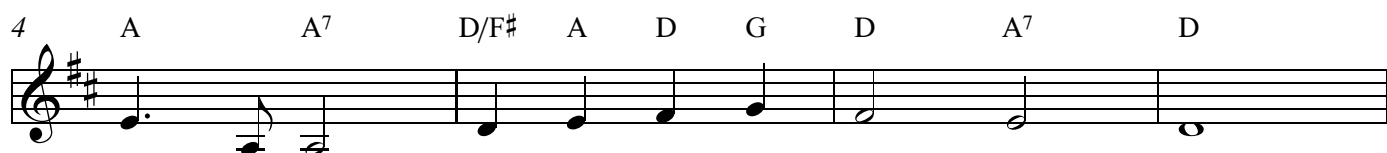
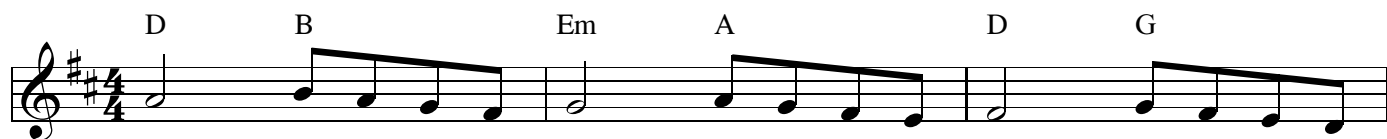
Angels We Have Heard on High

Traditional French Carol

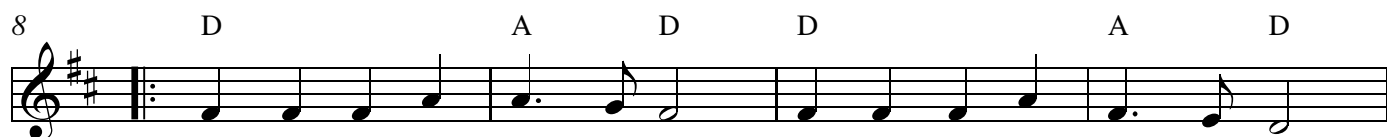
Traditional French Melody

CAPO 3

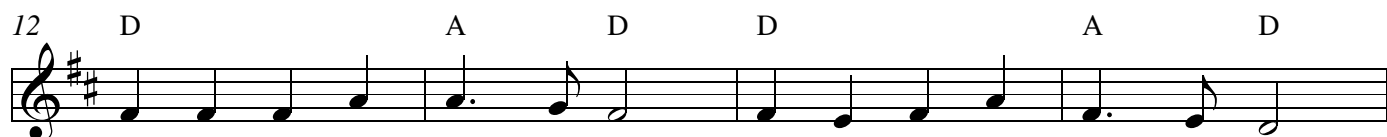
INTRO



VERSE

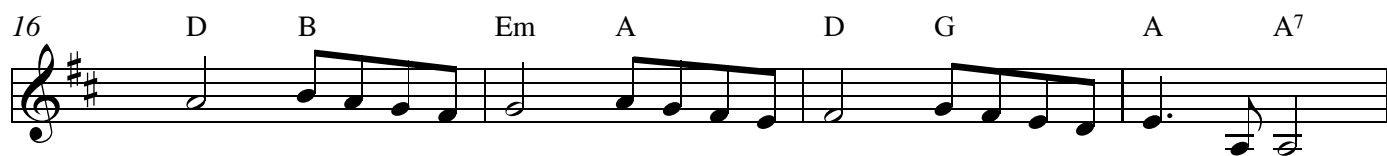


An - gels we have heard on high, sweet - ly sing - ing o'er the plains,
Shep - herds, why this ju - bi - lee? Why your joy - ous strains pro - long?
Come to Beth - le - hem, and see Him whose birth the an - gels sing;



and the moun - tains in re - ply, ech - o - ing their joy - ous strains.
Say what may the ti - dings be, which in - spire your heav'n - ly song?
Come a - dore on bend - ed knee Christ the Lord the new - born King.

REFRAIN



Glo - - - - - ri - a

20 D/F# A D G D A

in ex - cel - sis De - - o,

Detailed description: This block contains the first line of music, measures 20 and 21. The key signature has two sharps (F# and C#). The melody consists of quarter notes: D4 (measure 20), E4 (measure 20), F#4 (measure 20), G4 (measure 20), F#4 (measure 21), E4 (measure 21), and a whole rest (measure 21). Chords are indicated above the staff: D/F# (measure 20), A (measure 20), D (measure 20), G (measure 20), D (measure 21), and A (measure 21). The lyrics are 'in ex - cel - sis De - - o,' with hyphens indicating syllables across measures.

22 D B Em A D G A A7

Glo - - - - - ri - a

Detailed description: This block contains the second line of music, measures 22 and 23. The melody starts with a quarter note D4 (measure 22), followed by eighth notes E4, F#4, G4, A4, B4 (measure 22), and a quarter note A4 (measure 23). Chords are indicated above the staff: D (measure 22), B (measure 22), Em (measure 22), A (measure 22), D (measure 23), G (measure 23), A (measure 23), and A7 (measure 23). The lyrics are 'Glo - - - - - ri - a' with hyphens indicating syllables across measures.

26 D/F# A D G D A7 D

in ex - cel - sis De - - - o.

Detailed description: This block contains the third line of music, measures 26 and 27. The melody consists of quarter notes: D4 (measure 26), E4 (measure 26), F#4 (measure 26), G4 (measure 26), F#4 (measure 27), E4 (measure 27), and a whole note D4 (measure 27). Chords are indicated above the staff: D/F# (measure 26), A (measure 26), D (measure 26), G (measure 26), D (measure 27), A7 (measure 27), and D (measure 27). The lyrics are 'in ex - cel - sis De - - - o.' with hyphens indicating syllables across measures.